

Halogen (< 75 V) with Reflector



Области применения

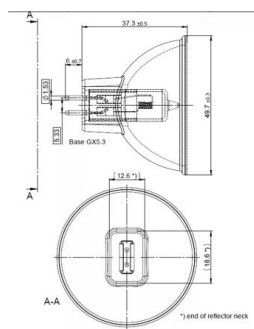
- Microscopy
- Laboratory & Analysis
- UV Curing
- Fiber Illumination
- Surgical & Dental Overhead

CBP_09.00 Product features and benefits, all [calc.]

- Precise filament alignment with patented quartz pinch technology
- OSRAM HLX lamps provide 10% higher luminous efficacy over standard halogen
- Instant on and nearly constant luminous flux over the life of the lamp
- Dimmable



Product family datasheet



64653 HLX 250W 24V

Product family datasheet

Technical data

	General Product Information		Electrical Data	Physical Attributes & Dimensions
Product description	ANSI code	LIF	Nominal voltage [calc.]	Lamp base
64653 HLX	ELC	A1/259	24 V	GX5.3

	Lifetime Data
Product description	Average Rated Life [GMS]
64653 HLX	50 hr

Product family datasheet

Советы по безопасности

To prevent personal injury or damage to property, halogen lamps may only be operated in suitable luminaires designed with suitable mechanisms (protective shields, grids, etc.) to ensure that in the event of a lamp bursting no parts/shards can escape and that during operation no ultraviolet radiation can escape. There must also be a warning sign to indicate that the lamps give off high levels of heat. Detailed information is available on request.

Application advice

For more detailed application information and graphics please see product datasheet.

Disclaimer

Subject to change without notice. Errors and omission excepted. Always make sure to use the most recent release.