

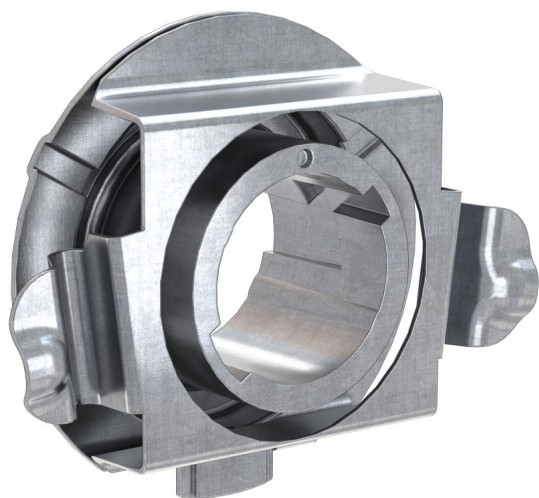
# LEDiving ADAPTER (OFFROAD) 64210DA03-1

Accessories for LED retrofit lamps



## Making LED upgrades fit right in

The mounting brackets offer an easy installation and compatibility for a variety of cars. Guarantees a perfect fit due to optimal fastening of the H7 lamp.

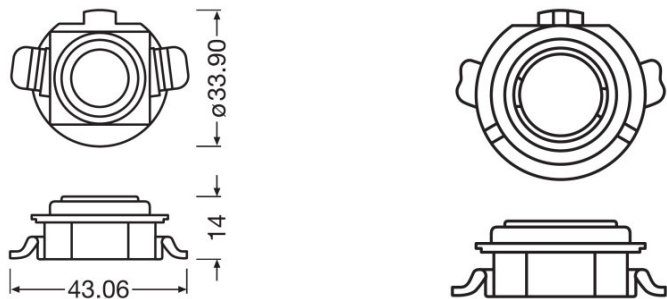


Technical data

Product information

|   |                               |
|---|-------------------------------|
| Order reference                             | 64210DA03-1                   |
| Application (Category and Product specific) | Accessories for LED retrofits |

Dimensions & weight



|                |         |
|----------------|---------|
| Diameter       | 33.9 mm |
| Product weight | 2.84 g  |
| Length         | 43.1 mm |

Lifespan

|           |         |
|-----------|---------|
| Guarantee | 3 years |
|-----------|---------|

Capabilities

|            |                 |
|------------|-----------------|
| Technology | LED accessories |
|------------|-----------------|

Country specific categorizations

|                 |             |
|-----------------|-------------|
| Order reference | 64210DA03-1 |
|-----------------|-------------|

Environmental information

| Information according Art. 33 of EU Regulation (EC) 1907/2006 (REACH) |  |
|---|--|
| Date of Declaration   | 07-03-2024   |
| Primary Article Identifier  | 4062172201872  |
| Candidate List Substance 1  | Lead   |
| CAS No. of substance 1  | 7439-92-1  |
| Safe Use Instruction  | The identification of the Candidate List substance is sufficient to allow safe use of the article. |

Product datasheet

|                                  |                                      |
|----------------------------------|--------------------------------------|
| Declaration No. in SCIP database | 9cc74b0b-e263-4e5a-b016-ce278cb04200 |
|----------------------------------|--------------------------------------|

Logistical Data

| Product code  | Product description              | Packaging unit<br>(Pieces/Unit) | Dimensions (length<br>x width x height) | Volume                | Gross weight |
|---------------|----------------------------------|---------------------------------|---|-----------------------|--------------|
| 4062172201872 | LEDriving Adapter<br>64210DA03-1 | Folding carton box<br>2         | 95 mm x 57 mm x<br>135 mm               | 0.73 dm <sup>3</sup>  | 29.00 g      |
| 4062172201889 | LEDriving Adapter<br>64210DA03-1 | Shipping carton box<br>20       | 415 mm x 109 mm x<br>134 mm             | 6.06 dm <sup>3</sup>  | 425.00 g     |
| 4062172201896 | LEDriving Adapter<br>64210DA03-1 | Shipping carton box<br>120      | 435 mm x 348 mm x<br>300 mm             | 45.41 dm <sup>3</sup> | 3327.00 g    |

The mentioned product code describes the smallest quantity unit which can be ordered. One shipping unit can contain one or more single products. When placing an order, for the quantity please enter single or multiples of a shipping unit.

Download Data

| File  |                                       |
|---|---------------------------------------|
|  | User instruction<br>LEDriving ADAPTER |

Application advice

For more detailed application information and graphics please see product datasheet.

Disclaimer

Subject to change without notice. Errors and omission excepted. Always make sure to use the most recent release.

