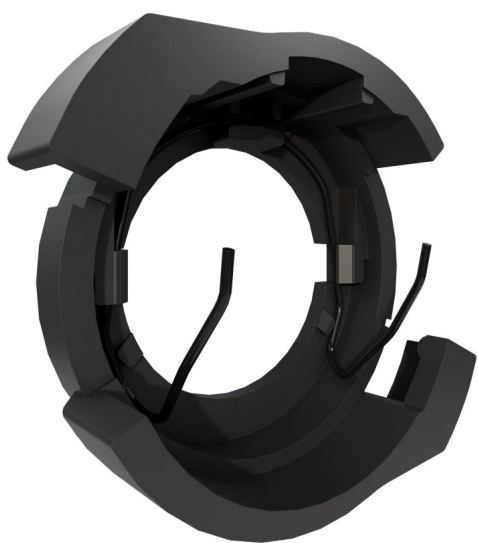


# LEDiving ADAPTER (OFFROAD) 64210DA09

Accessories for LED retrofit lamps



## Making LED upgrades fit right in

The mounting brackets offer an easy installation and compatibility for a variety of cars. Guarantees a perfect fit due to optimal fastening of the H7 lamp.

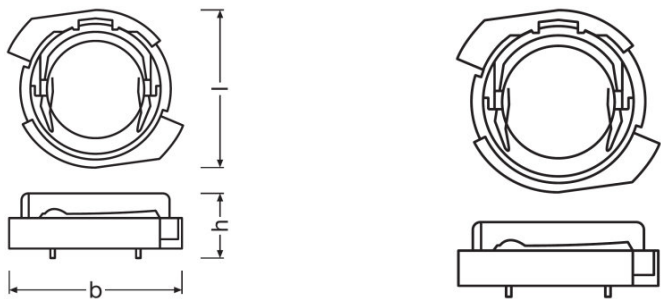
Product datasheet

Technical data

Product information

Order reference	64210DA09
Application (Category and Product specific)	Accessories for LED retrofits

Dimensions & weight



Diameter	40.7 mm
Product weight	7.00 g
Length	0.0 mm

Lifespan

Guarantee	3 years
-----------	---------

Capabilities

Technology	LED accessories
------------	-----------------

Country specific categorizations

Order reference	64210DA09
-----------------	-----------

Environmental information

Information according Art. 33 of EU Regulation (EC) 1907/2006 (REACH)	
Date of Declaration	08-03-2024
Primary Article Identifier	4062172360203
Candidate List Substance 1	No declarable substances contained
Declaration No. in SCIP database	No declarable substances contained

Logistical Data

Product datasheet

Product code	Product description	Packaging unit (Pieces/Unit)	Dimensions (length x width x height)	Volume	Gross weight
4062172360203	LEDriving Adapter 64210DA09	Folding carton box 2	95 mm x 57 mm x 135 mm	0.73 dm <sup>3</sup>	38.00 g
4062172360210	LEDriving Adapter 64210DA09	Shipping carton box 20	415 mm x 109 mm x 134 mm	6.06 dm <sup>3</sup>	508.00 g
4062172360227	LEDriving Adapter 64210DA09	Shipping carton box 120	435 mm x 348 mm x 300 mm	45.41 dm <sup>3</sup>	3826.00 g

The mentioned product code describes the smallest quantity unit which can be ordered. One shipping unit can contain one or more single products. When placing an order, for the quantity please enter single or multiples of a shipping unit.

Download Data

File	
	User instruction LEDriving ADAPTER 64210DA09 for H7 LED

Application advice

For more detailed application information and graphics please see product datasheet.

Disclaimer

Subject to change without notice. Errors and omission excepted. Always make sure to use the most recent release.

