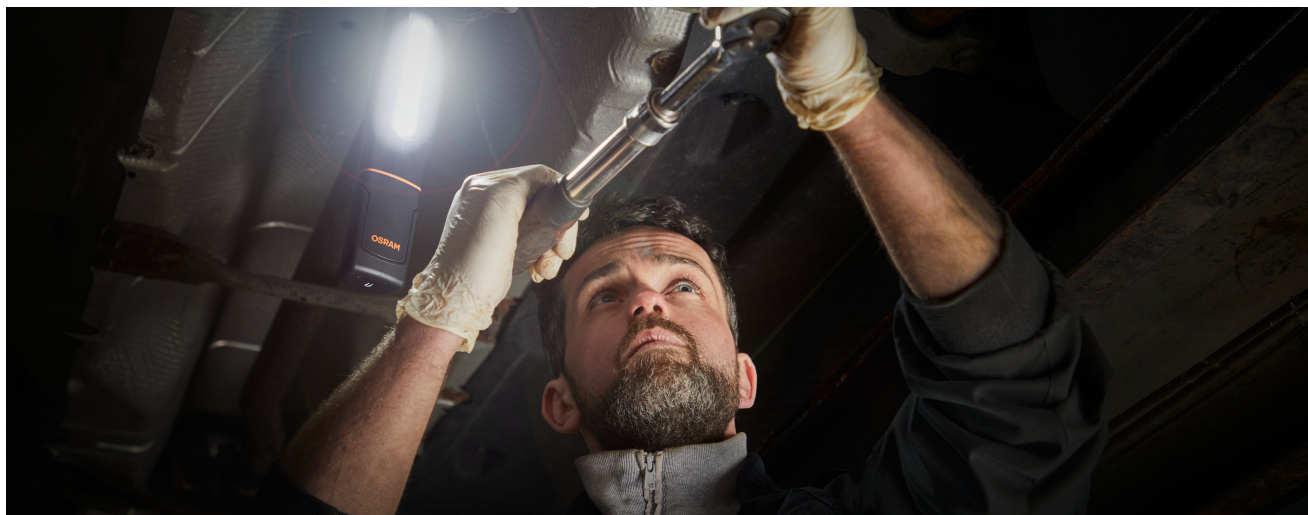


LEDinspect MAX500

LED Inspectionlights



Multi-Angle Flex & Twist

High flexibility due to multiple positioning possibilities



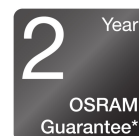
2in1

LED Inspectionlight & UV lamp in one



500 Lumen

Three light functions - high with up to 500 lm, low with up to 250 lm and torchlight function with up to 70 lm



2-year-OSRAM guarantee*

Systematic quality assurance measures underpin the premium workmanship and functionality of our products. Innovative technology and excellent quality really pay dividends for our customers.



Light is versatile

With three light functions - high with up to 500lm, low with up to 250lm and UV torchlight, the MAX500 offers high flexibility and different application possibilities. The 360° twist and 180° flex base give maximum flexibility to be able to adjust the angle of light exactly where needed. The integrated charge indicator shows the charging status of the rechargeable battery - up to 4.5h operating time at high power or up to 7.5h at low power. In accordance with the IP protection class IP65, this inspection light has protection against the ingress of dust and water and is tested for impact resistance in accordance with IK08. This inspection light contains an integrated hook & magnets for hands-free work and easy attachment and is therefore ideal as a light for manual activities, car repairs and in everyday life. In addition, OSRAM grants a 2-year guarantee on this product* USB charging cable and mains charger included.

Product family datasheet

Technical data

	Product information		Electrical data		Photometrical data	
Product description	Order reference	Application (Category and Product specific)	Nominal voltage	Nominal wattage	Light color LED	Luminous flux
INSPECTION LAMP	LEDIL402	LED inspection lights	3.7 V	16.50 W	White	500 lm

		LED module information	Dimensions & weight			
Product description	Color temperature	Number of LEDs per module	Product weight	Height	Width	Length
INSPECTION LAMP	6000 K	2	350.00 g	44.0 mm	59.0 mm	253.0 mm



	Colors & materials	Lifespan	Additional product data		
Product description	Base color	Guarantee	Scope of battery	Number of included batteries	
INSPECTION LAMP	Black / Orange	2 years	Yes	1	

		Capabilities	Certificates & standards	Environmental information Information according Art. 33 of EU Regulation (EC) 1907/2006 (REACH)
Product description	Type of Battery	Technology	IK Class	Date of Declaration
INSPECTION LAMP	Rechargeable	LED	IK08	07-03-2024

Product description	Primary Article Identifier	Candidate List Substance 1	CAS No. of substance 1	Safe Use Instruction
INSPECTION LAMP	4052899623835	Lead	7439-92-1	The identification of the Candidate List substance is sufficient to allow safe use of the article.

Product description	Declaration No. in SCIP database
INSPECTION LAMP	4ea2e5ca-7a27-48f2-b810-484a294b269a

Download Data

File	
	User instruction LEDinspect MAX 500 LEDIL402
	Movie application LEDinspect Inspection Lights Trailer

Application advice:

For more detailed application information and graphics please see product datasheet and user instruction.

*for precise conditions please refer to:

www.osram.com/am-guarantee

Application advice

For more detailed application information and graphics please see product datasheet.

Disclaimer

Subject to change without notice. Errors and omission excepted. Always make sure to use the most recent release.